



**Versatility for
any requirement**

**Air screwdrivers and nutrunners without clutch
CD...PRSF and AS, AN, AY**

Pistol models and angle models with flat angle head,
90° angle head, worm drive
Torque range: from 6 up to 110 Nm

Fiam®
PEOPLE AND SOLUTIONS

Air screwdrivers and nutrunners without clutch

Practical and versatile in use for any requirement

Fiam screwdrivers/nutrunners **without clutch** are **simple and practical** tightening solutions: the air motor is directly connected by means of adapters to the accessory (bit, socket, etc.) working on the screw.

The torque applied can be adjusted by regulating the air feed pressure.

These screwdrivers/nutrunners don't generate vibrations, guaranteeing the **operator's comfort**.

They are very **versatile solutions** as they can **tighten screws with different diameters on different joints**.

Pistol grip models are widely used for the assembly of wood, plastic, sheet metal furniture etc., and wherever **self-threading, self-drilling and wood screws** of different lengths and dimensions are used.

Angle models are indispensable when working in areas of **limited space** or **restricted access**.

Also air drills...

CD...PRSF models can **easily be transformed into powerful drills** by simply fitting a keyed chuck.



Various solutions for any requirement

AIR SCREWDRIVERS AND NUTRUNNERS **WITHOUT CLUTCH**

They are used in many applications for different products and screws. They are **very versatile** solutions as they can be used on different joints.

CD... PRSF models

PAGE 6

With 380 Watt in power, they tighten screws up to 16 Nm, particularly self-threading, self-drilling and wood screws of different lengths and dimensions are used.

AS... models

PAGE 7

With 260 Watt in power, they tighten every type of component from 11 up to 70 Nm; they can be used with metric screws up to M8 - M10.

A... RY models

PAGE 7

With 400 Watt in power, they tighten screws from 23 up to 30 Nm; they can be used with metric screws up to M10.

Equipped with flat angle head, they are used in areas of limited space or restricted access.

AN... models

PAGE 7

With 375 Watt in power, they are equipped with worm drive. They can be used for different applications, such as, for example, moving slides and carriages, on packaging machines for tightening straps, moving workpieces for machining, etc. They tighten torques from 50 up to 110 Nm.



.....
AS5RS



.....
A10RY



.....
AN...

Be demanding

Reliability

Long lifetime of the components thanks to careful design and to quality of the productive process which results in less maintenance and repair costs

Made in Fiam: designed and manufactured by Fiam, they guarantee the correct functioning in every working condition, **on every type of joint and with every type of threaded element**

The **tightening torque** can be **easily controlled** by adjusting the pressure of the compressed air supply, using the related pressure regulator (see Accessories available upon request)

Since these screwdrivers do not have the clutch, the torque control is entrusted to the sensitivity of the operator, who can rely on the whole power produced by the motor: this is very useful if **high tightening torques** are required

High resistance: the robust, reliable construction materials guarantee **constant performances and long life of the tool**

The **heads of the AS, AN, AY angle models**, in spite of their small dimensions, in respect to the high torque values given by the nutrunners, are **solid and have long lasting life**

Don't be satisfied with the maximum

Productivity

Considerable increase of the efficiency of the tightening cycle thanks to innovative systems

Angle models: They are indispensable when working in areas of **limited space or restricted access**, such as up against walls, structural metal sections or profiled beams, etc. In particular the AN air nutrunners, due to their **low speed and high torque values**, makes them suitable for use in a wide variety of different applications, such as, for example, moving slides and carriages, on packaging machines for tightening straps, moving workpieces for machining, etc.

Pistol models: They are widely **used for the assembly of wood, plastic and sheet metal furniture**, frames, electrical household appliances, toys, etc., and wherever selfthreading, self-drilling and wood screws of different lengths and dimensions are used

CD...PRSF models: they are provided with a **quick change chuck** for fast and easy changing of the bit

They are solutions **very versatile** as they can tighten screws with different diameters on different joints

CD...PRSF models: They are **extremely versatile**; as confirmation of their versatility, we remind you that by simply fitting a keyed chuck these screwdrivers can **easily be transformed into powerful drills**

Thanks to Fiam's great flexibility in proposing **customised solutions**, any production situation can be tightened, even the most complex



Perfection is
in your hands

Ergonomics

Optimization of the tool performances in regard to ergonomics and operator safety

The **low weight** and the **ergonomic grips** make easier to hold the tool, improving the handling and operator's comfort

Thanks to torque transmission system, that can be easily controlled by adjusting the pressure of the compressed air supply, they guarantee **very low vibration levels**

The **built-in silencing system** allows to considerably reduce the noise level

All models (except for AN models) are equipped with hanging ring, allowing a **very good balancing of the tool and improving handling**


The grip is designed to be used **both by right and left hand operators** and to guarantee the correct ergonomics to the **female hand** too

CD...PRSF models: comfortable **low effort reverse button**; it reduces finger fatigue

These tools are particularly **versatile and handy** thanks to the ideal **weight to power ratio**

The Fiam nutrunners/screwdrivers are **among the most compact tools on the market** thanks to the very good **dimensions ratio** (length/diameter/head dimension)

To make the tightening job even easier and **eliminate stress on the operator's arm**, special accessories are recommended: they permit higher use agility and flexibility and wide rotations of the tool around its axis (see Accessories available upon request)



Ergotech Project
Having full knowledge of the ergonomics needs and of the safety of the operator, Fiam optimizes the performances of its tools and offers consulting and qualified training for the correct use of the tools

Naturally
innovative

Ecology

Innovative systems designed paying even more attention with respect to environment and of its safeguard

The consolidated technological design of the air motor permits **very high decrease of compressed air consumption**, without affecting tool performance

All the components are **easy to dispose of** because they are built **using recyclable materials**; therefore they do not represent any danger for environmental pollution

All Fiam products are supplied with **eco-friendly packaging**

The **head construction materials** ensure a long life resulting in a reduction in maintenance costs and in component replacement



The possibility of using non lubricated air **eliminates the emission of oil fog** into the environment



CD10PRSF



CD16PRSF

Pistol grip air screwdrivers CD...PRSF

| Type of screwdriver | Model | Code | Grip | | Max torque on soft joint | | Idle speed | Starting system | | Reversibility | Weight | Dimensions (mm) | Compressed air consumption | Accessories | Noise level | Vibrations level |
|---------------------|----------|-----------|------|----|--------------------------|-------|------------|-----------------|------|---------------|--------|-----------------|----------------------------|-------------|-------------|------------------|
| | | | Type | Nm | in lb | rp.m. | | Type | Type | | | | | | | |
| | CD6PRSF | 114810510 | | 6 | 53.1 | 1750 | | | | 0,75 | 1.65 | 38x184x154 | 9 | 1/4" | 75 | <2,5 |
| | CD10PRSF | 114810520 | | 10 | 88.5 | 1100 | | | | 0,9 | 1.98 | 38x214x154 | 9 | 1/4" | 75 | <2,5 |
| | CD16PRSF | 114810530 | | 16 | 141.6 | 600 | | | | 0,9 | 1.98 | 38x214x154 | 9 | 1/4" | 75 | <2,5 |

Legend

Reversibility: All models are suitable for tightening and untightening operation

Push button

- The figures shown are measured at a pressure of 6,3 bar (ISO 2787), the recommended operating pressure.
- The tightening torque values have been measured in accordance with ISO 5393 standard.
- Noise level has been measured in accordance with ISO 3744 and ISO 15744 standards.
- Vibrations level has been measured in accordance with ISO 8662-1 and ISO 8662-7 standards.
- Accessory drive: 1/4", 6,35 mm female hexagonal drive (ISO 1173).
- The code number must be used when ordering.

The data given in the table are indicative and can be changed without prior notice. The torque values are purely indicative and may be influenced by the softness of the type of joint, by the type and length of the screw, by the pressure and quantity of air supply, and by the type of accessory used. The values indicated for noise and vibration levels were obtained in the laboratory, performing tests that comply with the standards stated, but alone are not sufficient for calculating risks. Values measured in the single work places may be higher than those stated. The values of actual exposure and consequent risks are specific and depend on the operator's method of work, the type of work piece and the work place, as well as the operator's time of exposure and his physical conditions. Fiam cannot be held responsible for any consequences deriving from the use of the information in the table when evaluating risks in the work place over which Fiam has no control. For all further details, please apply to the Fiam Technical Consultancy Service.

CD...PRSF air screwdrivers are designed for use with lubricated and unlubricated compressed air

Other technical features

| Models | Air inlet | Recommended hose bore |
|-----------|-----------|-----------------------|
| CD...PRSF | 1/4" gas | Ø 8 mm |

Standard equipment (supplied with the tool)

- Hanging ring.
- Auxiliary grip (code 681041200) for CD10PRSF and CD16PRSF models (prEN7921-12 standard).
- Use and maintenance manual.
- Eco-friendly packaging.

Accessories available upon request

| Keyed chuck | Air flow governor with scaled control | Other accessories |
|--------------------------------------------------------------------------------------------------------------------------------------------------|--------------------------------------------------------------------------------------------------------------------------------------------------------------------------------|---------------------------------------------------------------------------------------------------------------------------------------------------------------------------------|
| <ul style="list-style-type: none"> • Suitable to use CD...PRSF air screwdrivers as a drill (code 650141008; E DIN 3126 standard). | <ul style="list-style-type: none"> • Suitable to obtain the required torque value by adjusting the air feed flow (code 697451000). Less air flow = less torque. | <ul style="list-style-type: none"> • Bits, sockets etc.; balancers, exhaust silencers and other compressed air system accessories: see Fiam Accessory catalogue. |



Filter/Regulator/Lubricator

- Filter, pressure regulator, oil fog lubricator. Suitable to obtain the required torque value by adjusting the air feed pressure. Less pressure = less tightening torque.

| Threaded attack | Flow rate | Complete assembly | Reduction compl. of gauge | Lubricator |
|-----------------|-----------|-------------------|---------------------------|------------|
| mm | l/s | code | code | code |
| 1/4" gas | 1,7 ÷ 16 | 697331020 | 697331025 | 697281020 |
| 3/8" gas | 4,2 ÷ 20 | 697351020 | 697351025 | 697291020 |
| 1/2" gas | 8 ÷ 43 | 697371020 | 697371025 | 697301020 |



Air angle nutrunners AS, AN, AY

| Type of nutrunner | | Grip | Type of head | Max torque | | Idle speed | Starting system | Reversibility | Weight | | Compressed air consumption | Accessories | Noise level* | Vibrations level |
|-------------------|-----------|------|--------------|------------|--------|------------|-----------------|---------------|--------|------|----------------------------|---------------------------------|--------------|------------------|
| Model | Code | Type | Type | Nm | in lb | r.p.m. | Type | Type | Kg | lb | l/s | Drive | dBA | m/s ² |
| AS5RS | 114890905 | | 90° | 11 | 97.35 | 1100 | | | 1,040 | 2.29 | 10 | <input type="checkbox"/> M 3/8" | 80 | < 2,5 |
| AS6RS | 114890906 | | 90° | 16 | 141.6 | 800 | | | 1,040 | 2.29 | 10 | <input type="checkbox"/> M 3/8" | 78 | < 2,5 |
| AS10RS | 114890910 | | 90° | 36 | 318.6 | 350 | | | 1,300 | 2.86 | 10 | <input type="checkbox"/> M 3/8" | 77 | < 2,5 |
| AS60RS | 114890960 | | 90° | 70 | 619.5 | 300 | | | 2,100 | 4.62 | 12 | <input type="checkbox"/> M 1/2" | 78 | < 2,5 |
| A6RS1 | 114890924 | | FLAT HEAD | 12,5 | 110.63 | 550 | | | 1,400 | 3.08 | 9 | <input type="checkbox"/> F 1/4" | 80 | < 2,5 |
| A8RY | 116390908 | | FLAT HEAD | 23 | 203.55 | 450 | | | 2,000 | 4.4 | 10 | <input type="checkbox"/> F 14mm | 80 | < 2,5 |
| A10RY | 116390910 | | FLAT HEAD | 30 | 265.5 | 300 | | | 2,000 | 4.4 | 10 | <input type="checkbox"/> F 14mm | 80 | < 2,5 |
| AN50S | 116090145 | | WORM DRIVE | 50 | 442.5 | 450 | | | 2,200 | 4.84 | 13 | <input type="checkbox"/> F 12mm | 77 | < 2,5 |
| AN90S | 116090140 | | WORM DRIVE | 90 | 796.5 | 125 | | | 2,350 | 5.17 | 13 | <input type="checkbox"/> F 12mm | 77 | < 2,5 |
| AN110S | 116090135 | | WORM DRIVE | 110 | 973.5 | 65 | | | 2,350 | 5.17 | 13 | <input type="checkbox"/> F 12mm | 77 | < 2,5 |
| AN10-32S | 116090130 | | WORM DRIVE | 110 | 973.5 | 32 | | | 2,350 | 5.17 | 13 | <input type="checkbox"/> F 12mm | 77 | < 2,5 |

Legenda simboli

Reversibility: All models are suitable for tightening and untightening operation
 * Using either the bottom hexagonal drive (right-hand rotation) or top hexagonal drive (left-hand rotation)

Lever start

Push button start

- The figures shown are measured at a pressure of 6,3 bar (ISO 2787), the recommended operating pressure.
- The tightening torque values have been measured in accordance with ISO 5393 standard.
- Noise level has been measured in accordance with ISO 3744 and ISO 15744 standards.
- Vibrations level has been measured in accordance with ISO 8662-1 and ISO 8662-7 standard.
- Accessory drive: 1/4"; 6,35 mm; female hexagonal 12 and 14 mm drive (ISO 1173); male square drive (ISO 1174-1).
- The code number must be used when ordering.

The data given in the table are indicative and can be changed without prior notice. The torque values are purely indicative and may be influenced by the softness of the type of joint, by the type and length of the screw, by the pressure and quantity of air supply, and by the type of accessory used. The values indicated for noise and vibration levels were obtained in the laboratory, performing tests that comply with the standards stated, but alone are not sufficient for calculating risks. Values measured in the single work places may be higher than those stated. The values of actual exposure and consequent risks are specific and depend on the operator's method of work, the type of work piece and the work place, as well as the operator's time of exposure and his physical conditions. Fiam cannot be held responsible for any consequences deriving from the use of the information in the table when evaluating risks in the work place over which Fiam has no control. For all further details, please apply to the Fiam Technical Consultancy Service.

Values for the maximum tightening torque (110 Nm) and idle speed (32 rpm) were established with an idle feeding pressure of 3 Bar. The feeding pressure must not exceed 3 bar to guarantee a long life of the tool's internal components.

Fiam nutrunners are designed for use with either lubricated or unlubricated compressed air

Other technical features

| Models | Air inlet | Recommended hose bore |
|----------------|-----------|-----------------------|
| AS...RS; A6RS1 | 1/4" gas | Ø 8 mm |
| A8RY; A10RY | 1/4" gas | Ø 10 mm |
| AN...; AS60RS | 1/4" gas | Ø 10 mm |

Standard equipment (supplied with the tool)

- Hanging ring (excluding mod. AN...)
- Use and maintenance manual
- Eco-friendly packaging

Models available upon request

- Models A6RS1, A8RY and A10RY with **different hexagonal drive**: when ordering add size of hexagonal required to the end of the code model (e.g.: A6RS1 → A6RS1/8, A8RY → A8RY/13 and A10RY → A10RY/13). The hexagonal drives which are not standard are generally used without accessory.
- Models AS5RS and AS6RS with female hexagonal drive for insert bits: when ordering add BIT to the end of the code model (e.g.: AS6RS → AS6RS BIT).

Accessories available upon request

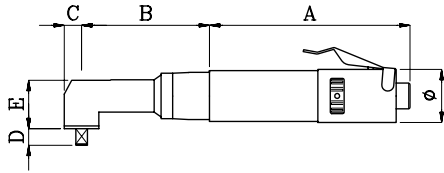
- Bits, sockets etc.; balancers, exhaust silencers and other compressed air system accessories: see Fiam Screwdrivers catalogue.

Filter, Pressure regulator, Oil fog lubricator

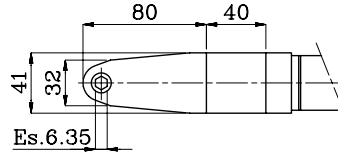
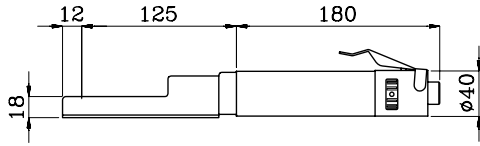
| Threaded attack | Flow rate | Complete assembly | Reduction compl. of gauge | Lubricator |
|-----------------|-----------|-------------------|---------------------------|------------|
| mm | l/s | code | code | code |
| 1/4" gas | 1,7 ÷ 16 | 697331020 | 697331025 | 697281020 |
| 3/8" gas | 4,2 ÷ 20 | 697351020 | 697351025 | 697291020 |
| 1/2" gas | 8 ÷ 43 | 697371020 | 697371025 | 697301020 |



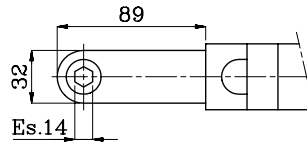
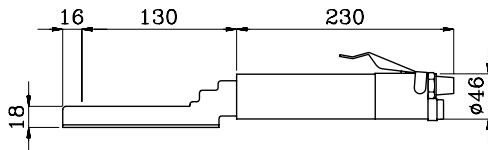
OVERALL DIMENSIONS



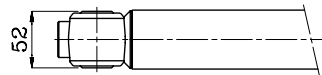
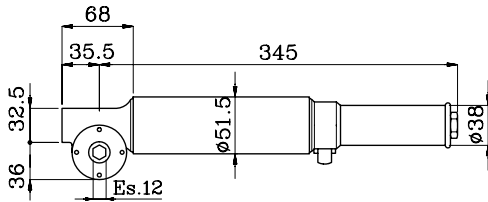
| Models | Ø | A | B | C | D | E |
|---------------|----|-----|-----|----|------|----|
| ASRRS - AS6RS | 40 | 156 | 100 | 14 | 12 | 36 |
| AS10RS | 40 | 180 | 145 | 14 | 12 | 36 |
| AS60RS | 40 | 340 | 90 | 20 | 16,5 | 46 |



Models
A6RS1



Models
A...RY



Models
AN...